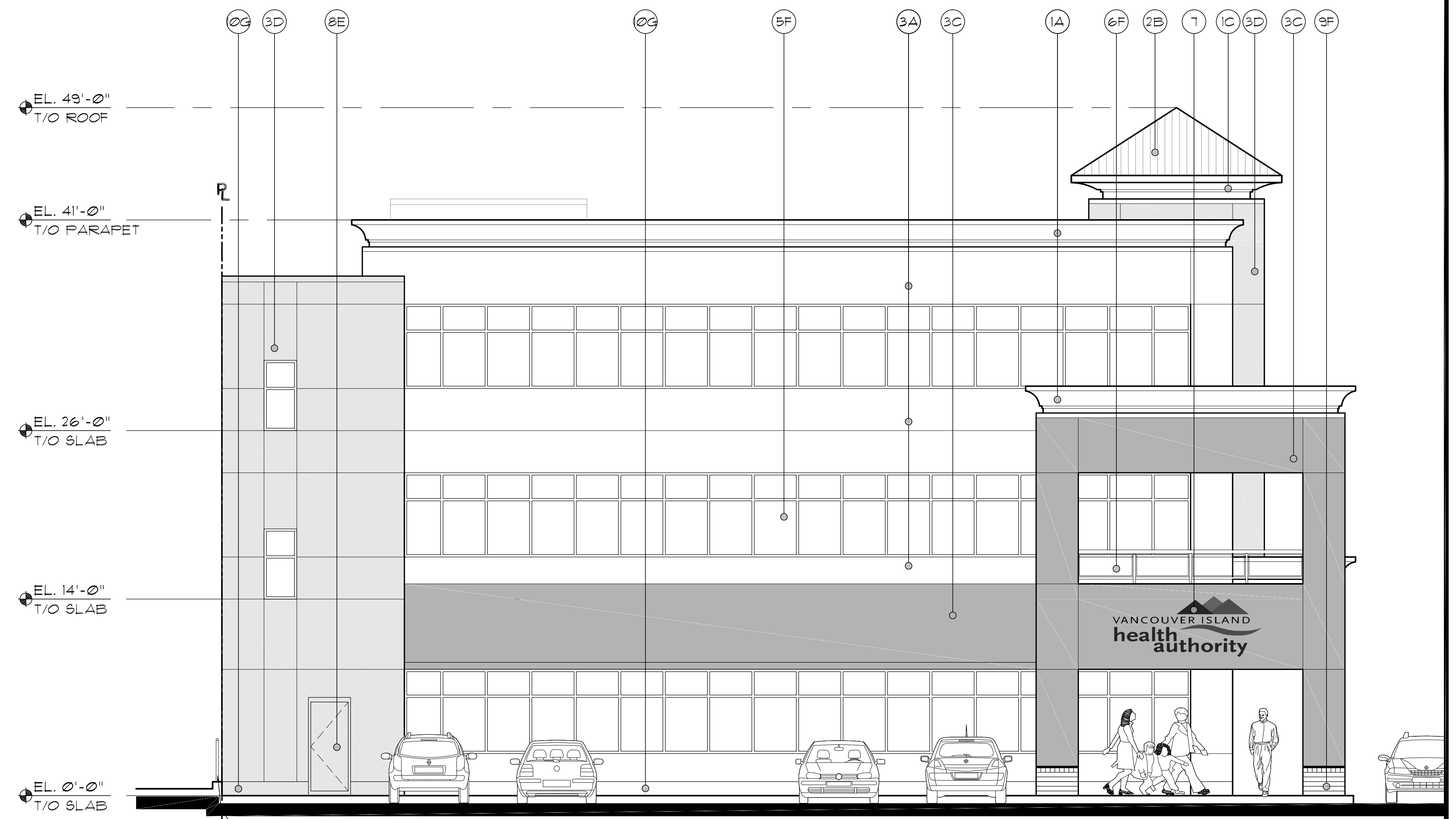
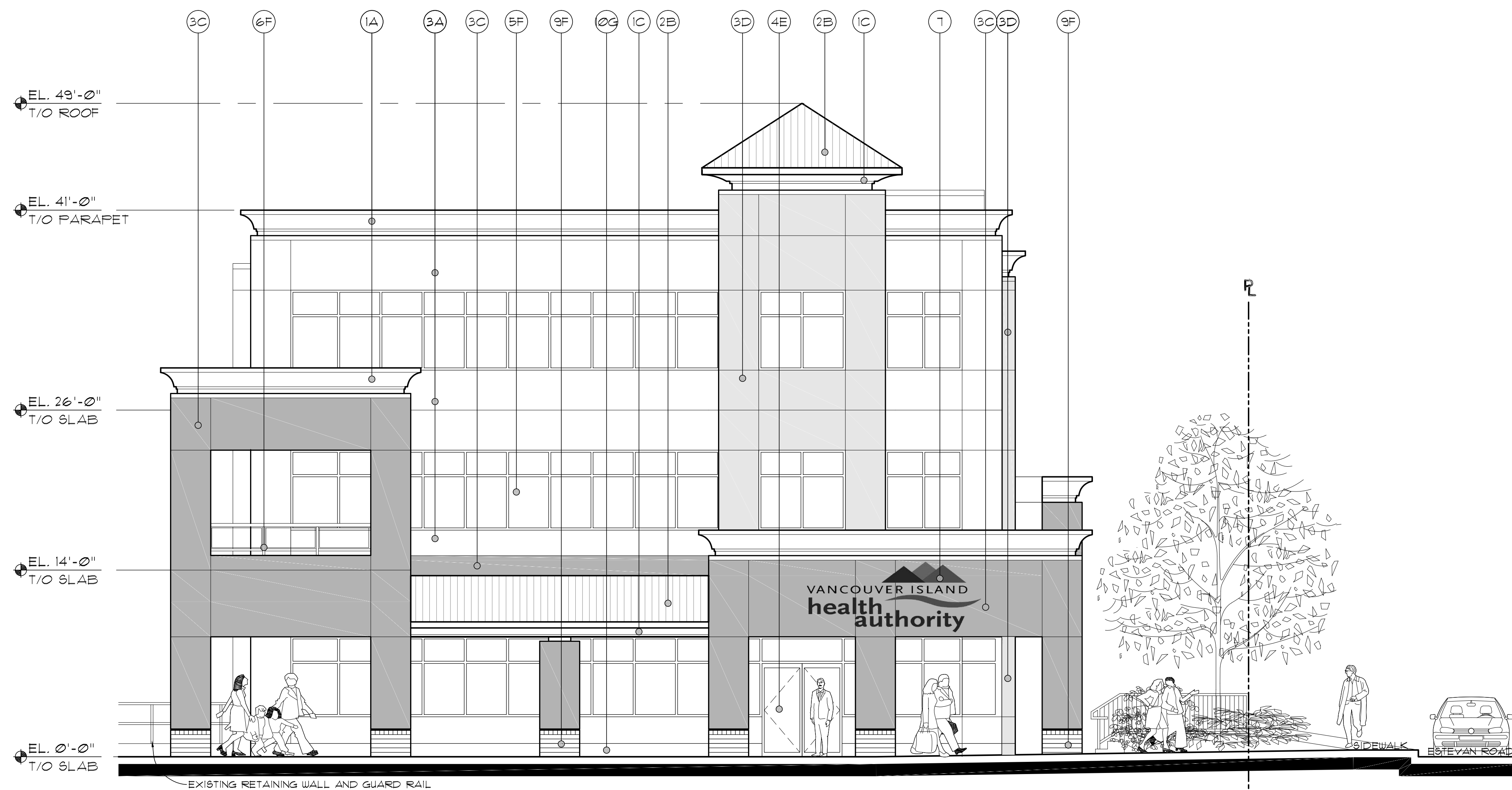




1 EAST ELEVATION
SCALE: 3/16" = 1'-0"



2 WEST ELEVATION
SCALE: 3/16" = 1'-0"



3 SOUTH ELEVATION
SCALE: 3/16" = 1'-0"

EXTERIOR MATERIALS:

- ① ACRYLIC STUCCO FINISH ON POLYSTYRENE CORNICE PROFILE
- ② STANDING SEAM METAL ROOF GLADDING
- ③ ACRYLIC STUCCO FINISH
- ④ STOREFRONT DOOR, PRE-FIN. ALUM. FRAME
- ⑤ DOUBLE GLAZED STOREFRONT WINDOWS (THERMALLY BROKEN)
- ⑥ STEEL FRAMED GLASS RAILING
- ⑦ SIGNAGE BY TENANT
- ⑧ INSULATED HOLLOW METAL DOOR
- ⑨ 4" BRICK VENEER
- ⑩ CONCRETE UPSTAND
- ⑪ FABRIC AWNING (FLAME RETARDANT)

EXTERIOR COLOURS:

- ① BENJAMIN MOORE HC-99 PUTNAM IVORY
- ② COPPER PENNY
- ③ BENJAMIN MOORE CC-486 TIRAMISU
- ④ BENJAMIN MOORE CC-488 BISCOTTI
- ⑤ DARK BRONZE TO MATCH PHASE 1
- ⑥ TO MATCH PHASE 1
- ⑦ SMOOTH FINISH
- ⑧ AINSHADE, 9105 CORPORATE RED

NO.	DATE	DESCRIPTION
1	12/23/11	ISSUED FOR DAP
2	10/10/11	DESCRIPTION
3		REVISIONS

This drawing, as an instrument of service, is the property of Urban Design Group Architects Ltd., and may not be reproduced, copied or loaned without written permission. All designs, concepts, and other information shown on this drawing, are for use on this project only, and shall not be used otherwise without written permission.

consultant

PROPOSED COMMERCIAL DEVELOPMENT
1451 ESTEVAN ROAD, NANAIMO, BC
for NOORT DEVELOPMENTS



project number 3420
 sheet title

ELEVATIONS

date FEB/18/11 sheet number
 scale 3/16"=1'-0"
 drawn YC
 checked EC
A-3.1